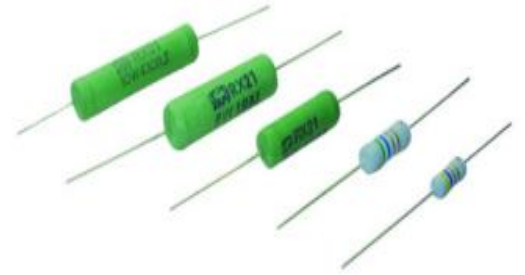


RX21 系列 涂覆型线绕固定电阻器 Series RX21 Coated wirewound fixed resistors

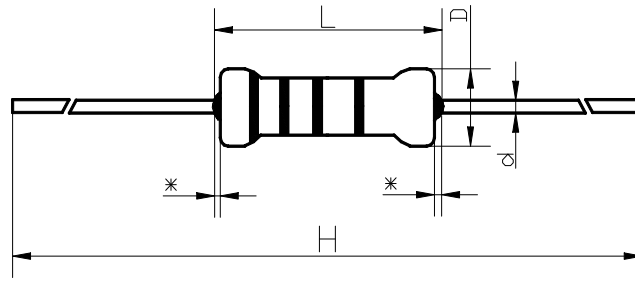
一、产品特点: Features

- 1、阻值低、负荷大 Low resistance and heavy load
- 2、长期工作稳定性高 Long-term stability
- 3、体积小、便于安装 Small size and easy installation
- 6、使用不燃性涂料包封，具有不燃性、绝缘性、安全性等特点
Non-combustible coating is used for sealing, with non-combustibility, insulation, safety and other characteristics
- 7、产品符合欧盟 ROHS 要求 Products meet EU-ROHS

二、产品实物图片 Picture



三、外形尺寸 Dimensions

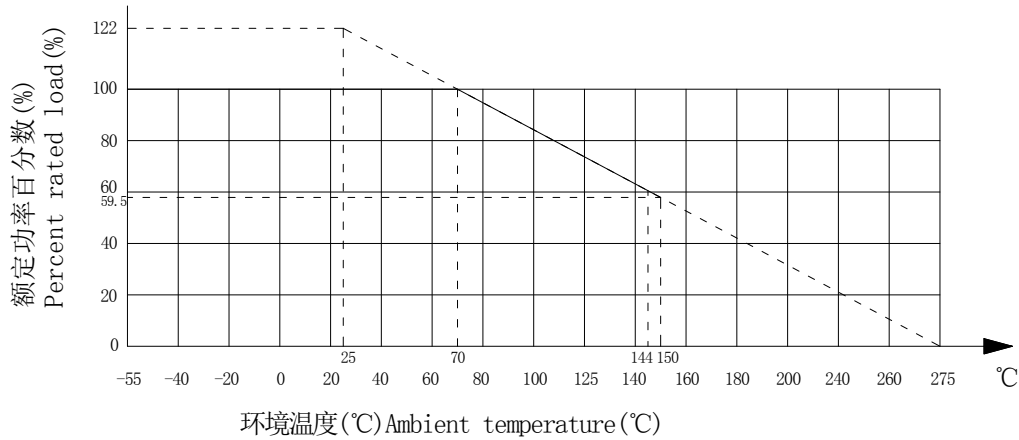


型号 Type	额定功率 P_R (W)	尺寸 Dimensions (mm)				漆根长度*The length of paints on the pin (mm)
		Dmax	Lmax	H±1	d±0.05	
RX21	0.5	4.0	10.5	60~100	0.40~0.60	≤1
	1	5.0	12	60~100	0.50~0.10	≤1.5
	2	5.5	16	60~70	0.54~0.72	
	3	6.0	16	60~80	0.60~0.72	
	4	6.0	16	60~70	0.60~0.72	
	5	9.0	25	60~70	0.60~0.72	

四、主要技术指标 Technical and standard electrical specifications

型号 Type	额定功率 P_R (W)	温度系数 TCR $10^{-6}/^{\circ}\text{C}$	阻值范围 Resistance range (Ω)	阻值允许偏差 Resistance Tolerance (%)	使用温度范围 Operating Temp Range ($^{\circ}\text{C}$)
RX21	0.5	±250	0.1 ~ 600	±5、±10	-55 ~ +155
	1		0.1 ~ 600		
	2		0.1 ~ 1000		
	3		0.1 ~ 1000		
	4		0.1 ~ 1000		
	5		0.1 ~ 1000		

五、降功耗曲线图 Power derating curve



六、基本特性 The basic features

试验项目 Test item	试验方法 Test method	性能要求 Specifications
短时过负荷 Short time overload	10U _R , 5s	$\Delta R \leq \pm (1\%R + 0.05\Omega)$
耐焊接热 Resistance to soldering heat	350°C ± 10°C, 3.5s ± 5s, 2+0.5mm	$\Delta R \leq \pm (1\%R + 0.05\Omega)$
可焊性 Solderability	265°C ± 5°C, 5s ± 0.5s, 2+0.5mm	浸锡面 covered ≥ 95%
引出端强度 Terminal strength	拉力 Tensile: 10N 弯曲 bending: 2 times 扭转 torsion: 180°, 2 次 times	$\Delta R \leq \pm (1\%R + 0.05\Omega)$
温度快速变化 Rapid Change of temperature	-55°C ~ +155°C, 5 cycles	$\Delta R \leq \pm (2\%R + 0.05\Omega)$
室温耐久性 Endurance at room temperature	Room temp, U _R , 1000h	$\Delta R \leq \pm (5\%R + 0.1\Omega)$
气候顺序 Climate sequence	GB/T5729-2003 中 4.23 条 as specified in GB/T5729-2003, item 4.23	$\Delta R \leq \pm (5\%R + 0.5\Omega)$
振动 Vibration	(10~500)Hz, 0.75mm 或 98/s ² (取较小者 whichever smaller), 6h	$\Delta R \leq \pm (1\%R + 0.05\Omega)$
上限类别温度耐久性 Endurance at upper category temperature	155°C, 1000h	$\Delta R \leq \pm (5\%R + 0.5\Omega)$
稳态湿热 Damp heat, steady state	40°C ± 2°C, RH(90~95)%, 21 days	$\Delta R \leq \pm (5\%R + 0.5\Omega)$

六、订货指南 Ordering Information

RX21-0.5W-15Ω-J-加工方式

型号 Type--额定功率 Rated Power—标称阻值 Nominal Resistance---允许偏差 Tolerance--加工方式 Processing way

对于本页内容的任何变更，恕不另行通知。订货前请确认技术参数。Specifications are subject to change without notice